

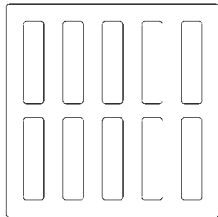
5890 ELEVATED & BRIDGE DRAIN INLET

Heavy duty

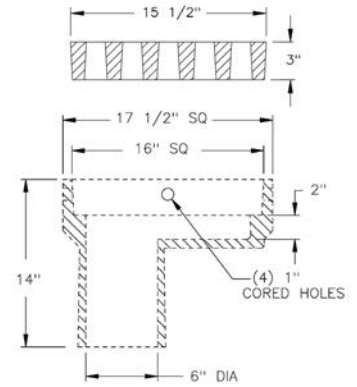
5890M grate has approximate 95 sq. in. open area

Options

5890M2 grate has approximate 75 sq. in. open area



M2 Grate

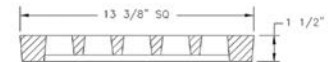
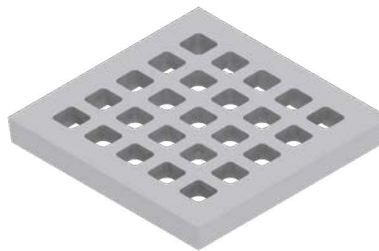


V-5913-1 GRATE

Heavy duty

Approximate 52 sq. in. open area

EJ recommends the use of iron frames providing support to entire bearing surface

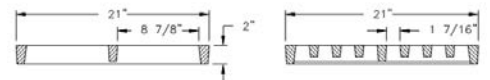


V-5921-2 GRATE

Light duty (Non-traffic)

Approximate 205 sq. in. open area

EJ recommends the use of iron frames providing support to entire bearing surface



Supplied By:



877-903-7246

www.trenchdrainsupply.com

